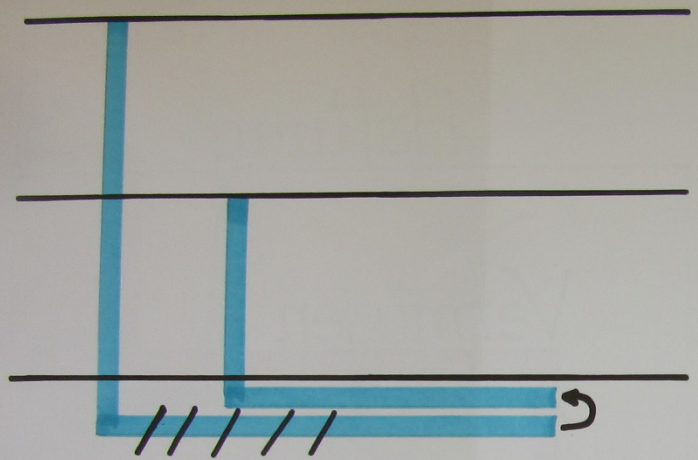
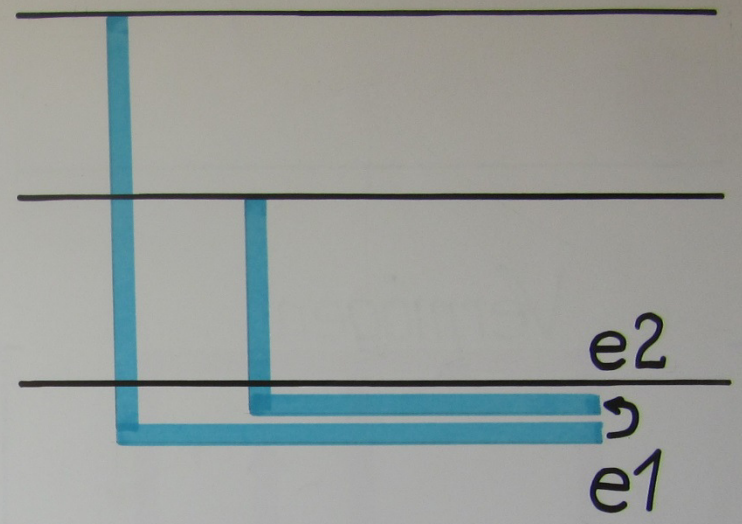


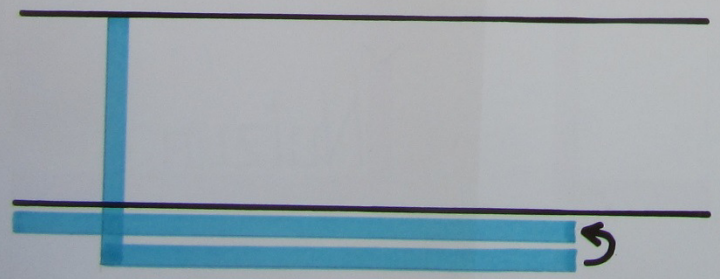
BEDINGTE GELTUNG



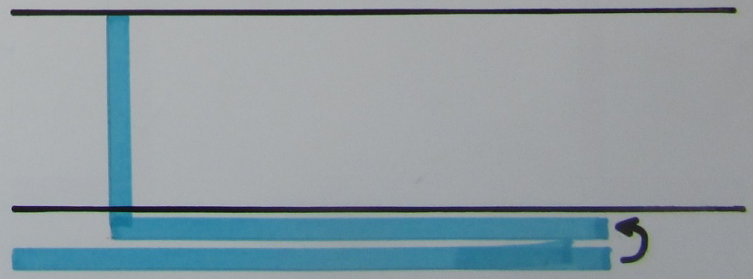
EFFEKTIVE GELTUNG



10 ABGB



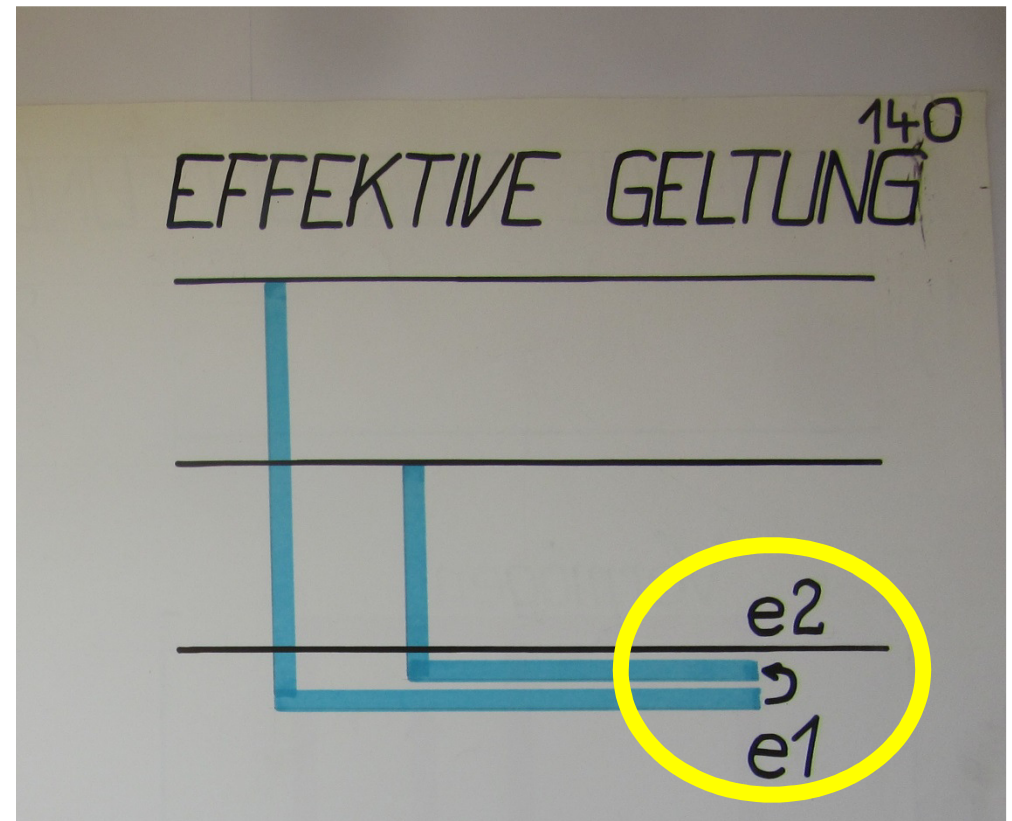
1 B-VG



BEDINGTE GELTUNG

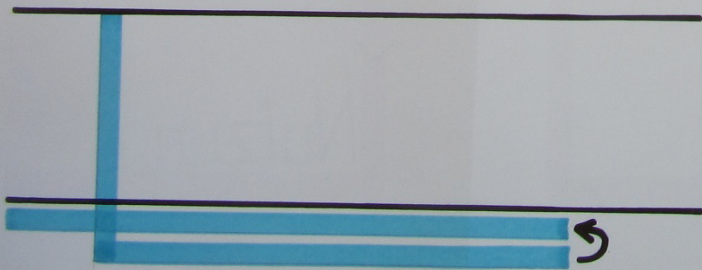


//// = Bedingungen

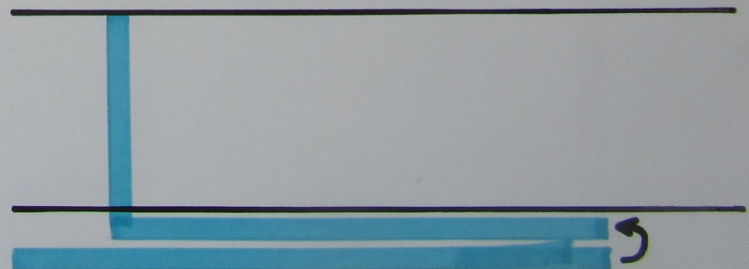


*Beide Normen bzw. Pflichten sind effektiv:
sowohl die Sachnorm N2 als auch die N1,
die der N2 die Geltung verleiht
bzw vorschreibt, der N2 zu gehorchen*

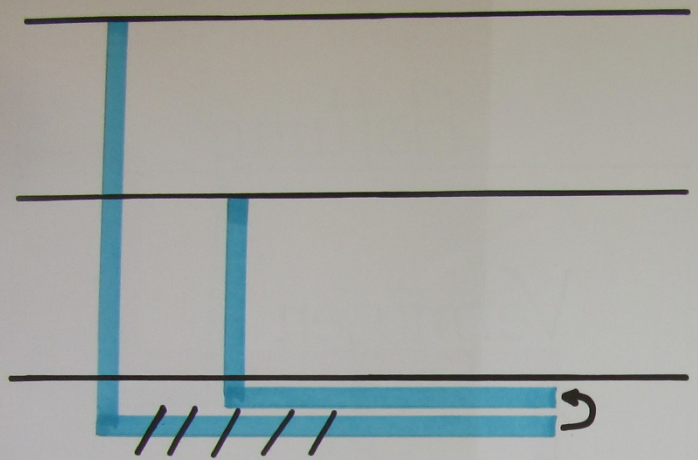
10 ABGB



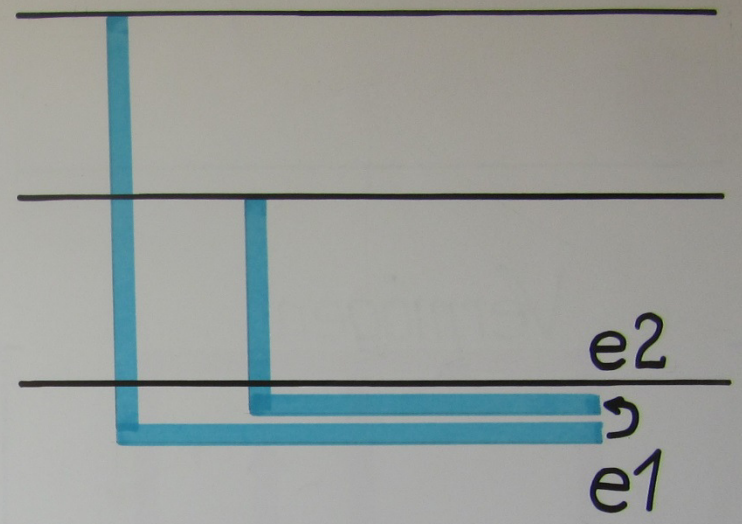
1 B-VG



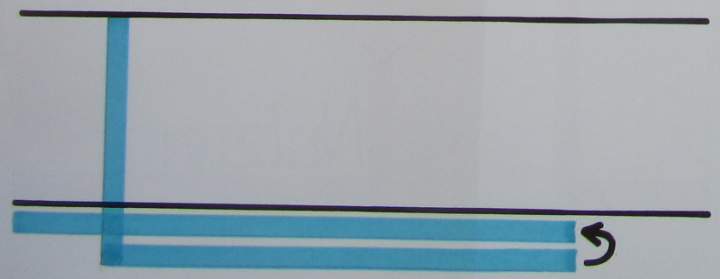
BEDINGTE GELTUNG



EFFEKTIVE GELTUNG



10 ABGB



1 B-VG

