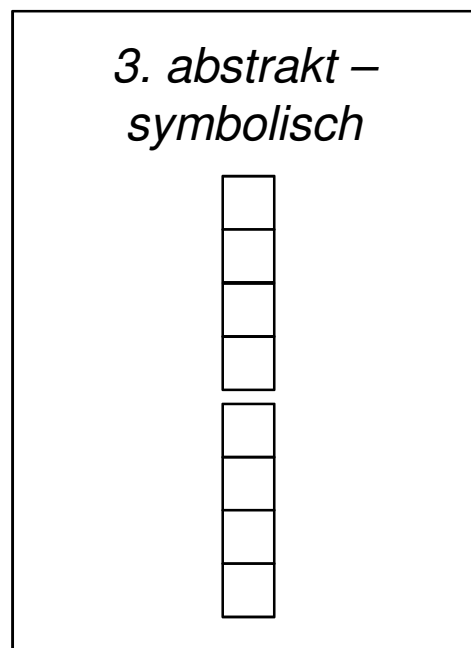
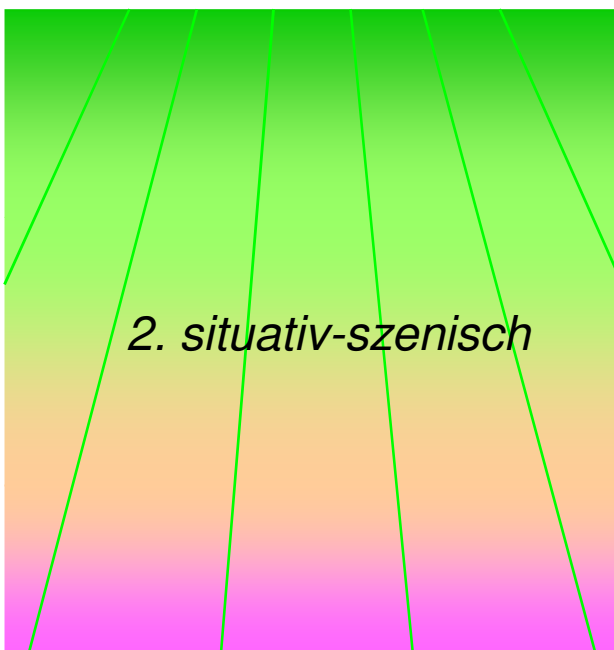
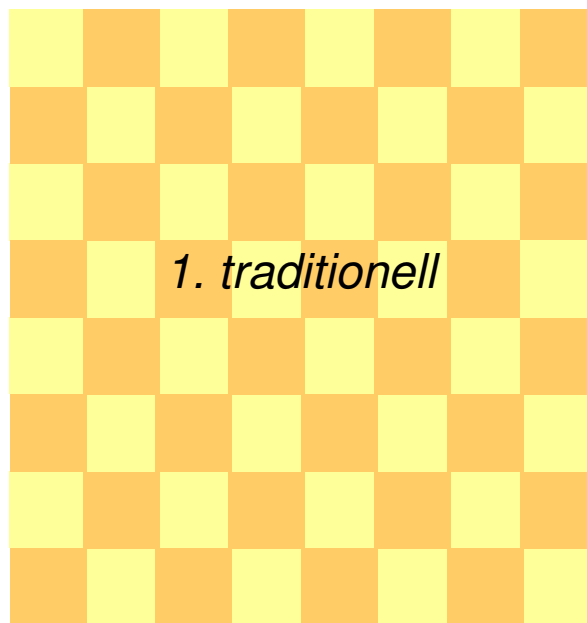
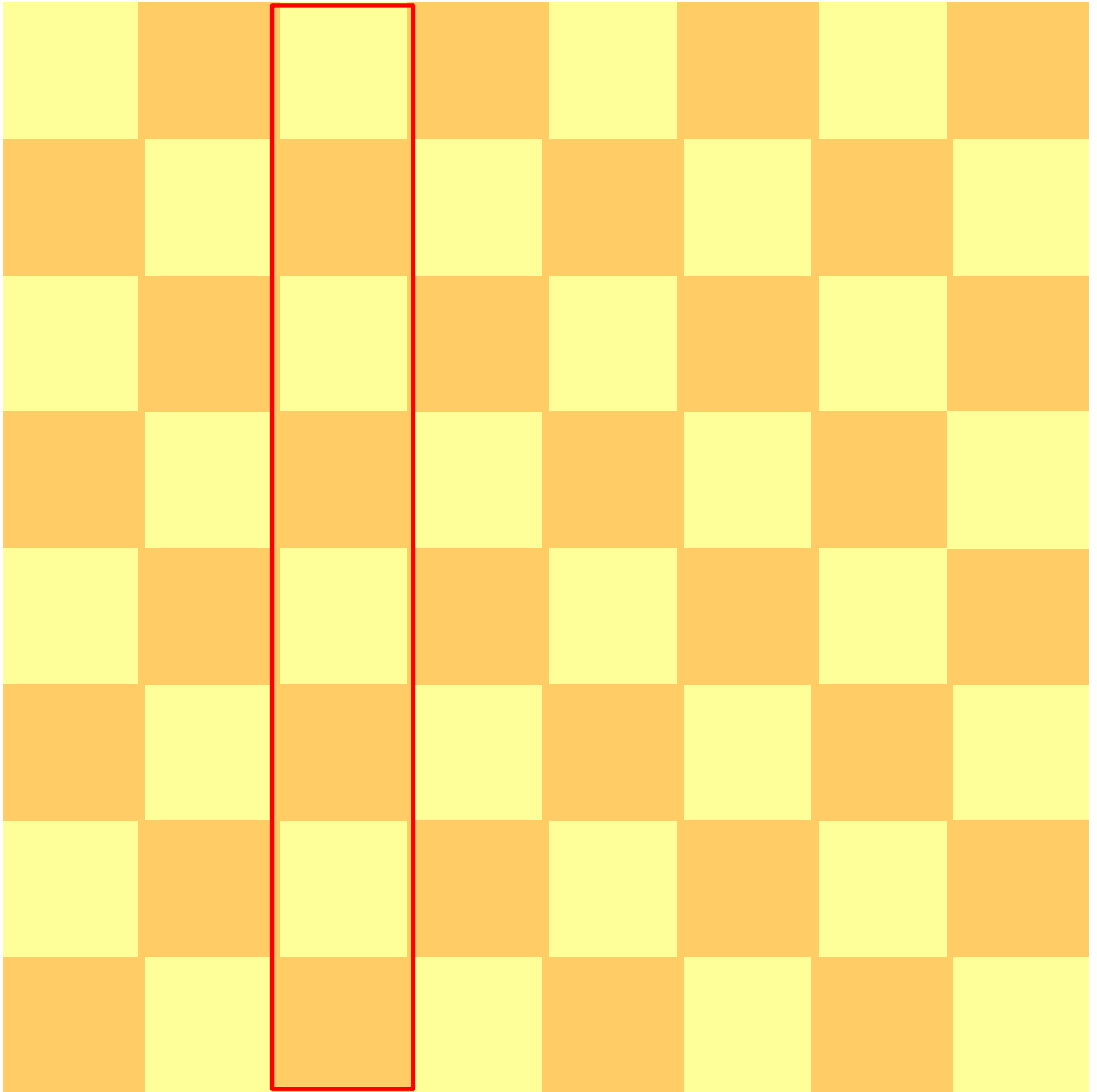


Linie c1 – c8

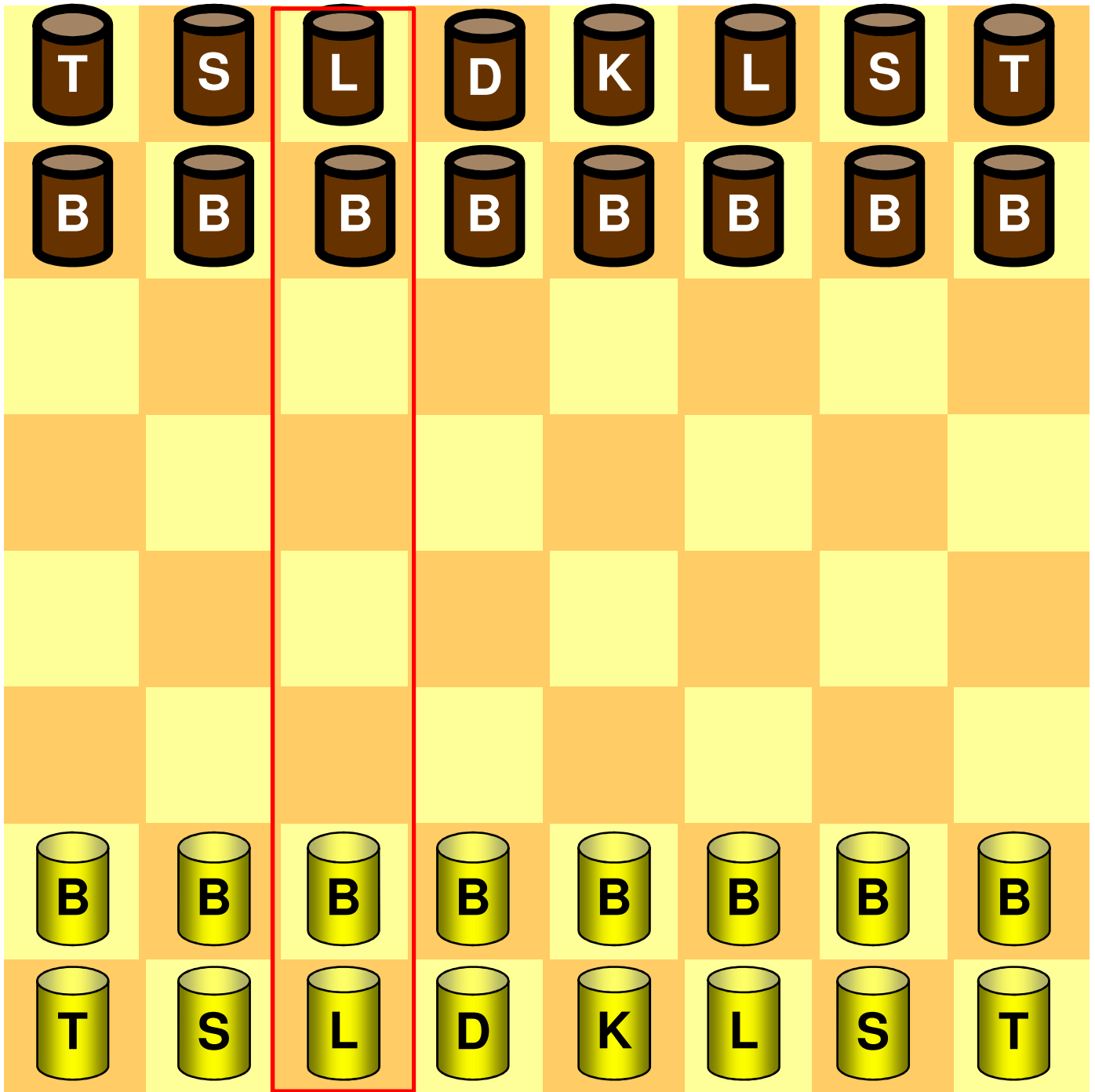
Schachvisualisierung



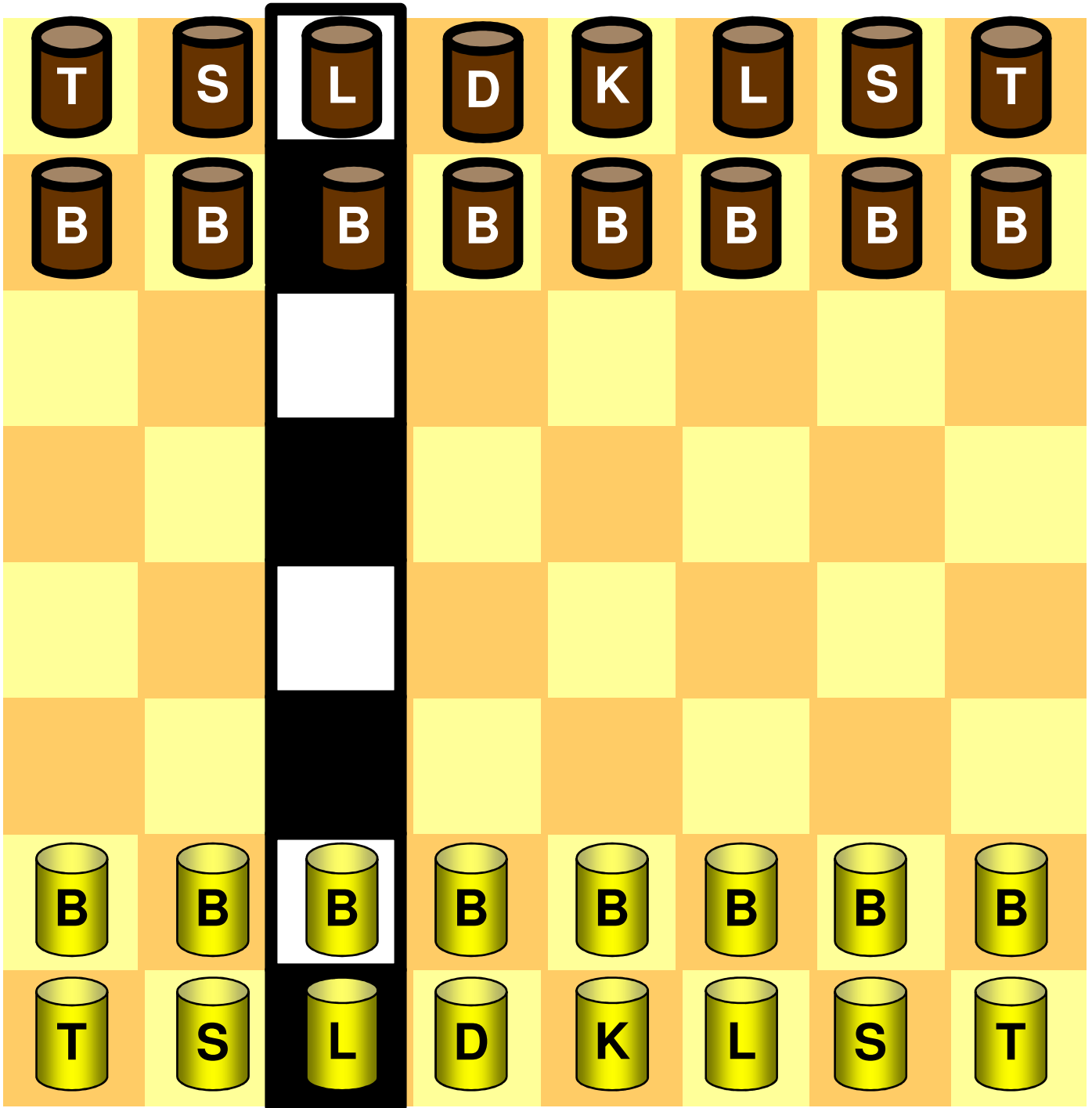
Linie c1 – c8



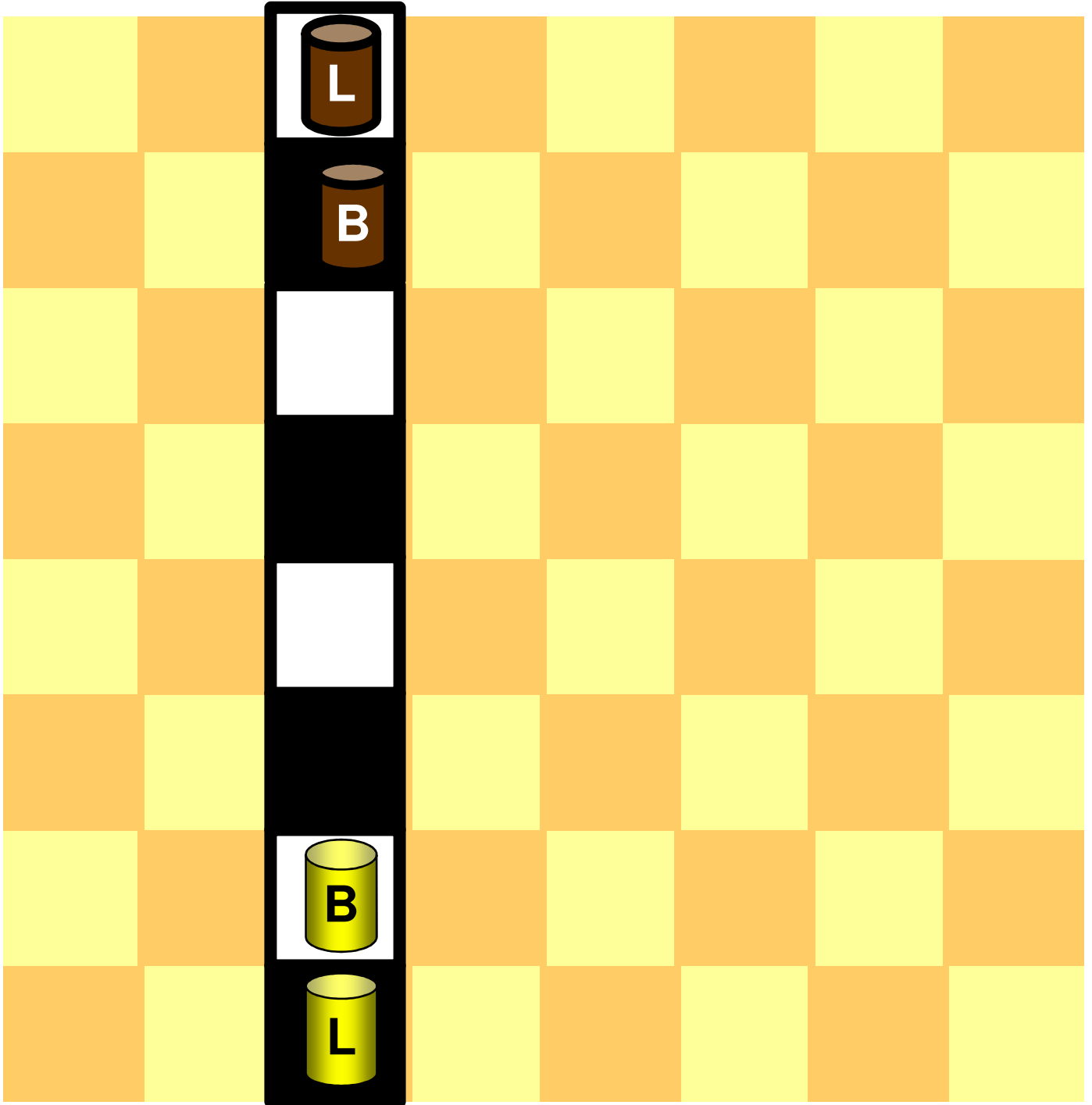
Linie c1 – c8



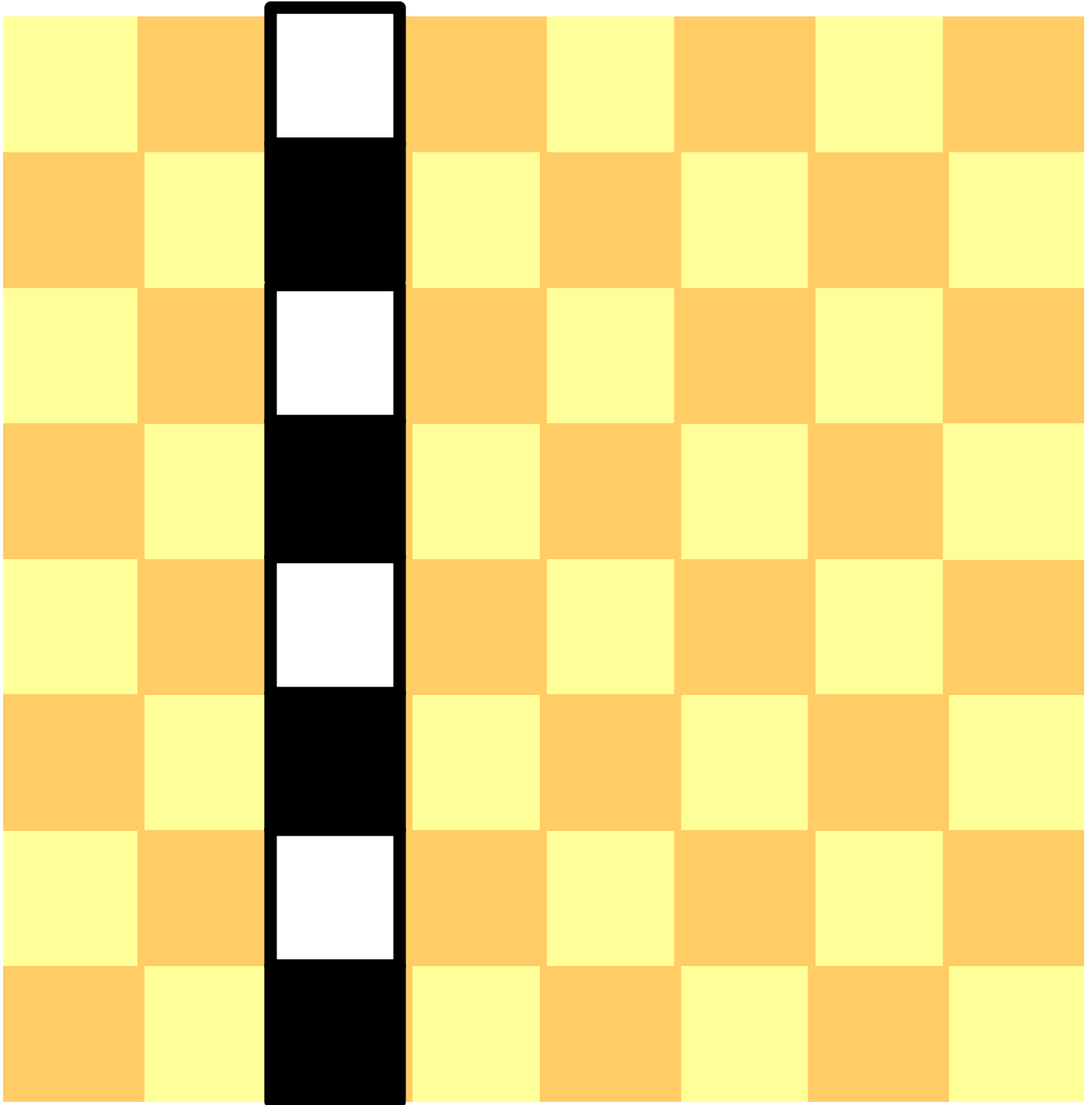
Linie c1 – c8



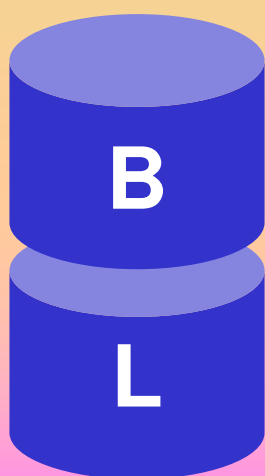
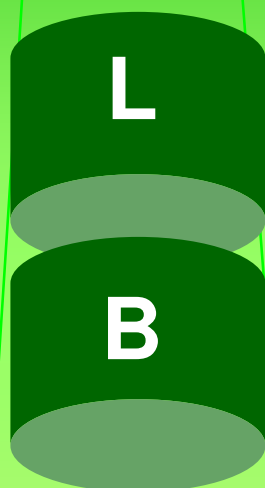
Linie c1 – c8



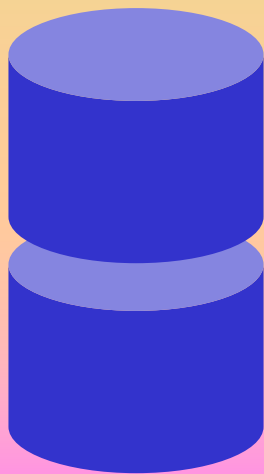
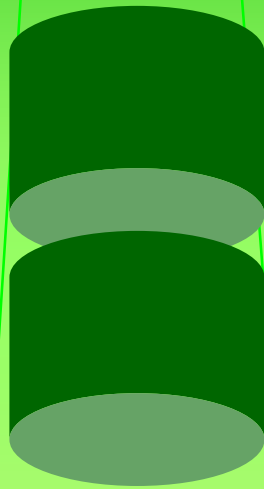
Linie c1 – c8



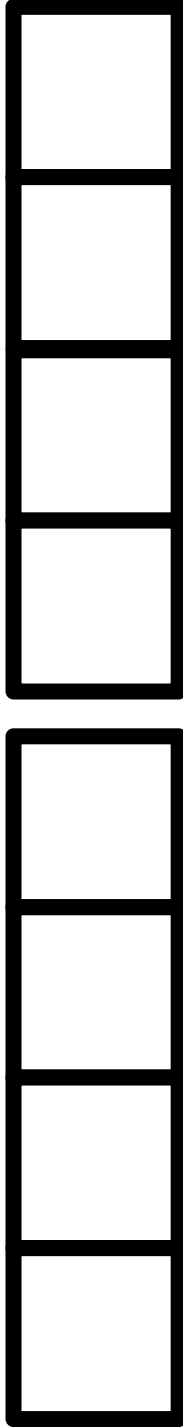
situativ-szenisch



situativ-szenisch

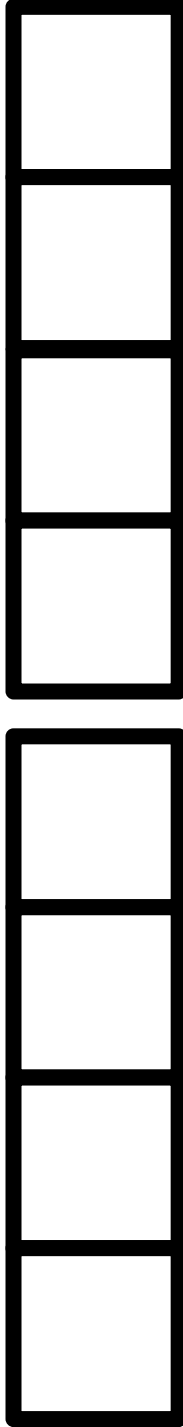


symbolisch



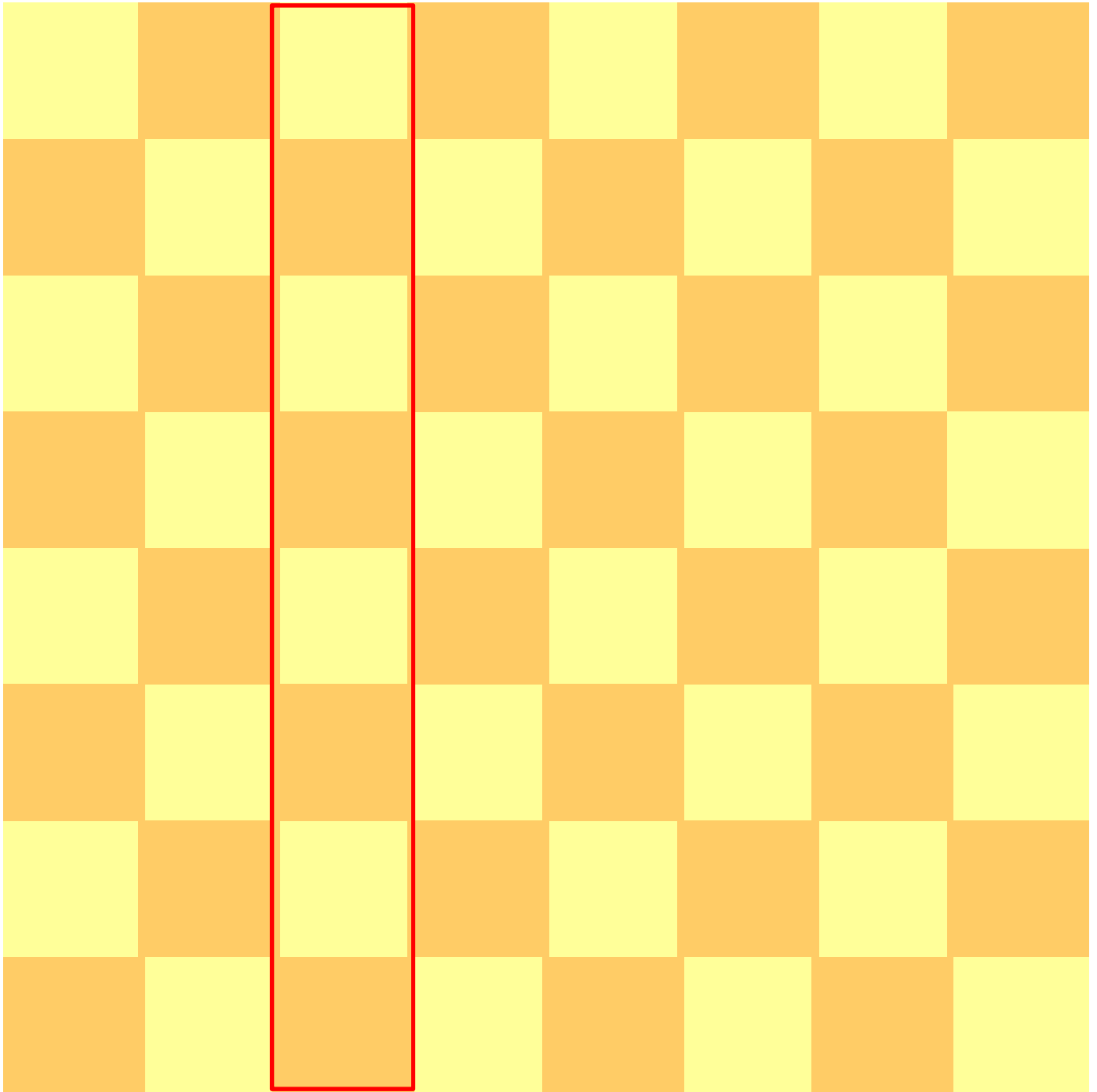


symbolisch



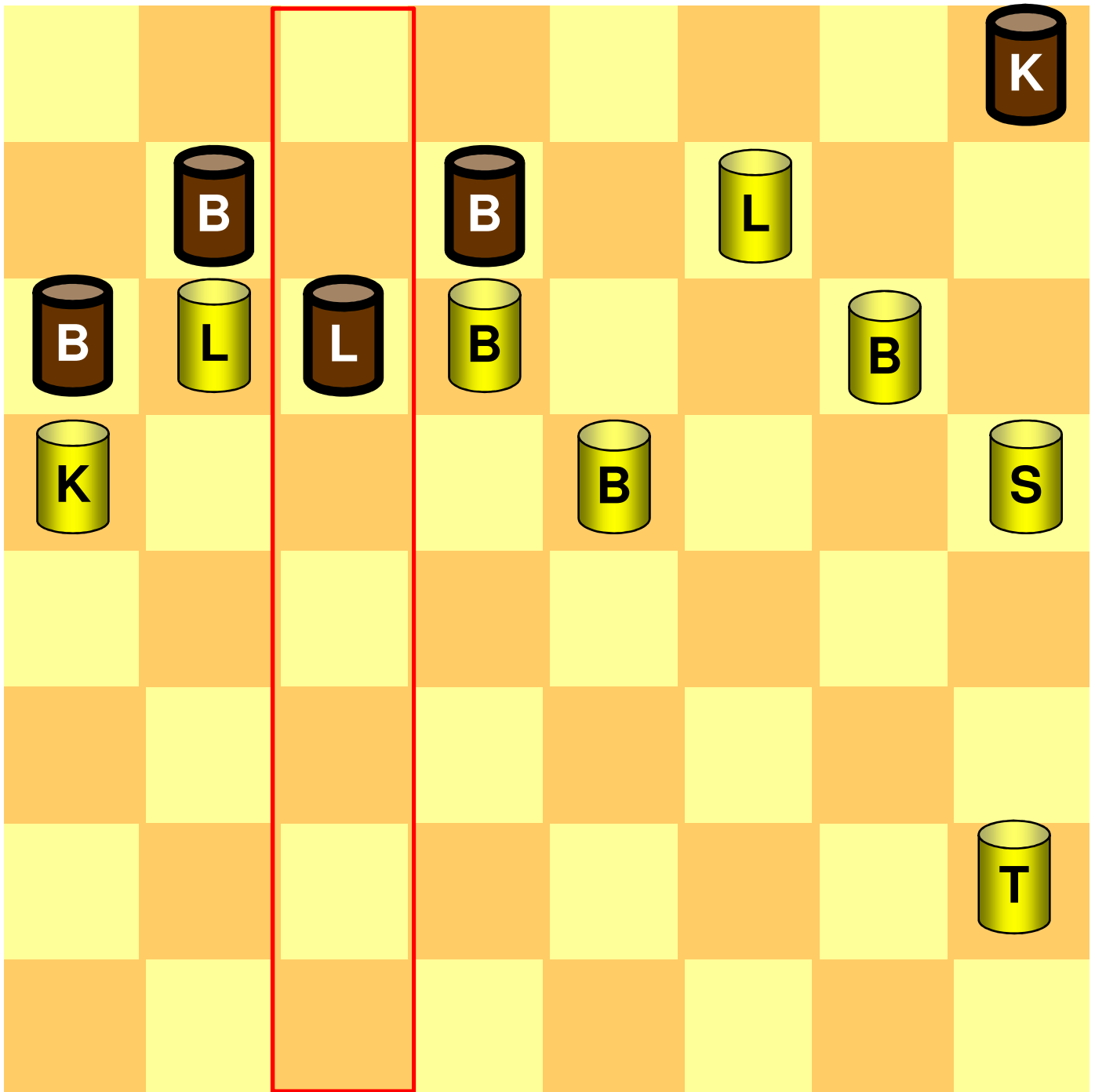


Linie c1 – c8



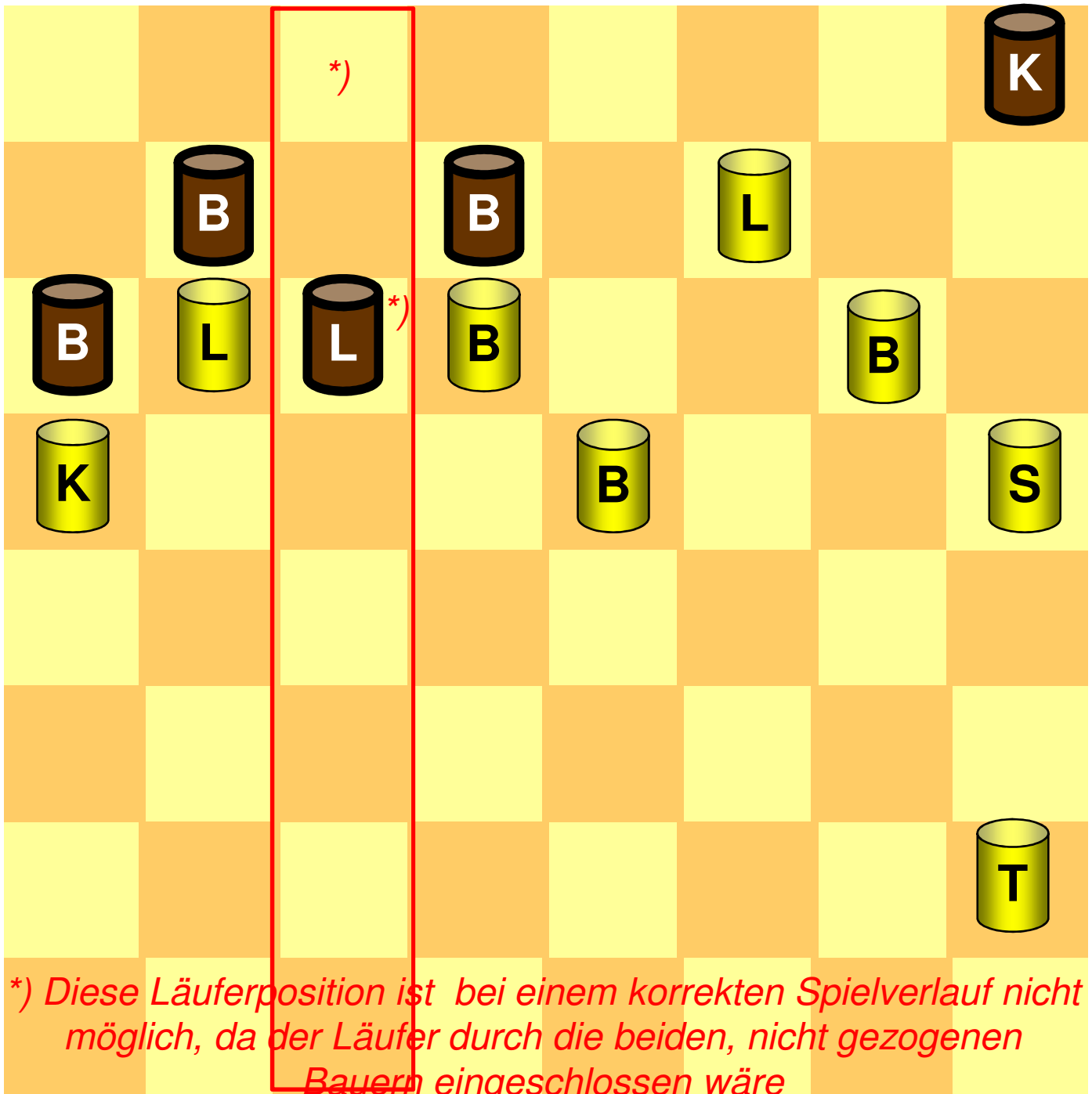
*Portius, Schachspielkunst, 1920¹⁴, Seite 128,
Aufgaben in zwei Zügen II (Verfasser: Th. Herlin)*

Aufgabe in zwei Zügen



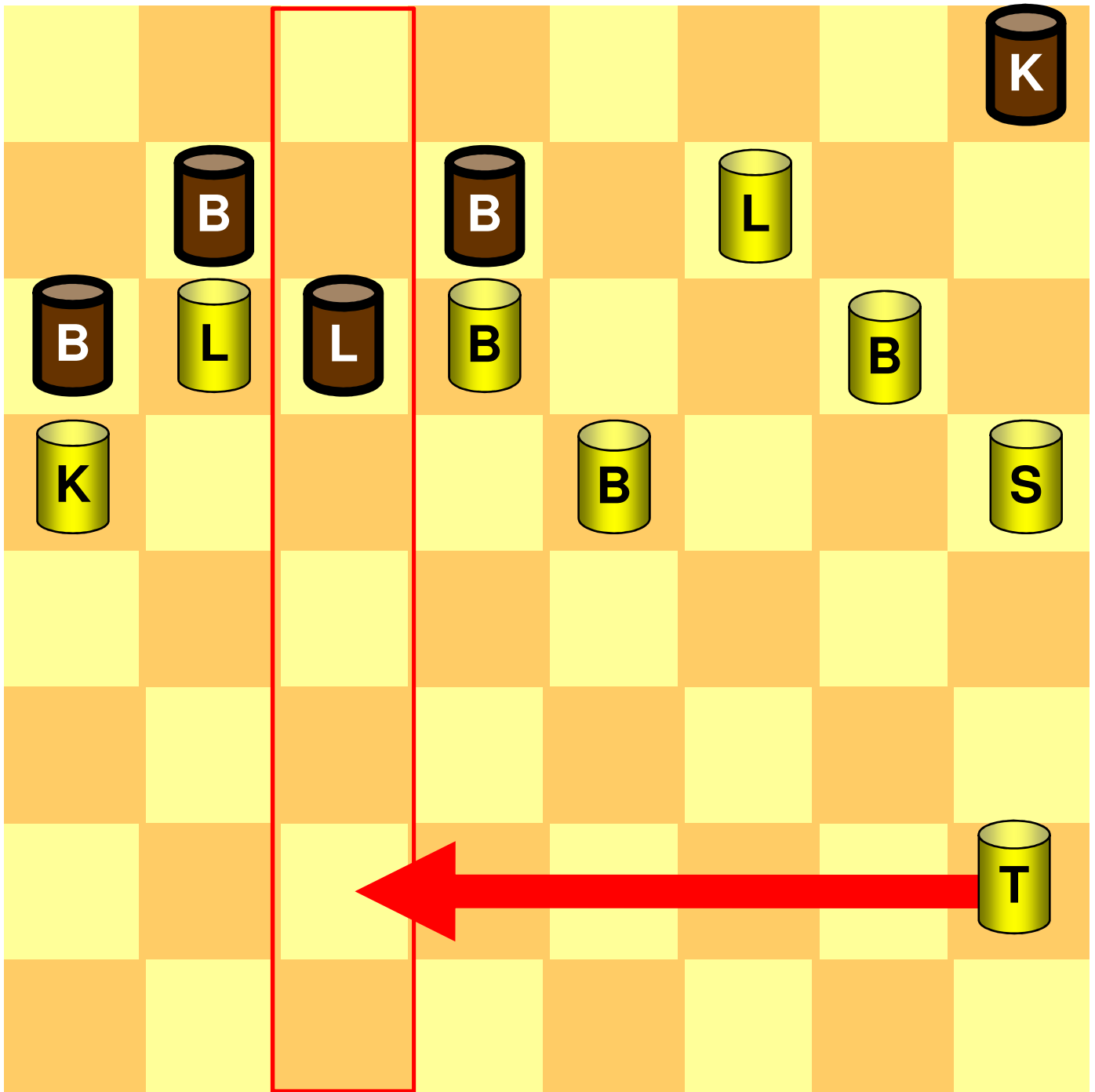
*Portius, Schachspielkunst, 1920¹⁴, Seite 128,
Aufgaben in zwei Zügen II (Verfasser: Th. Herlin)*

Aufgabe in zwei Zügen



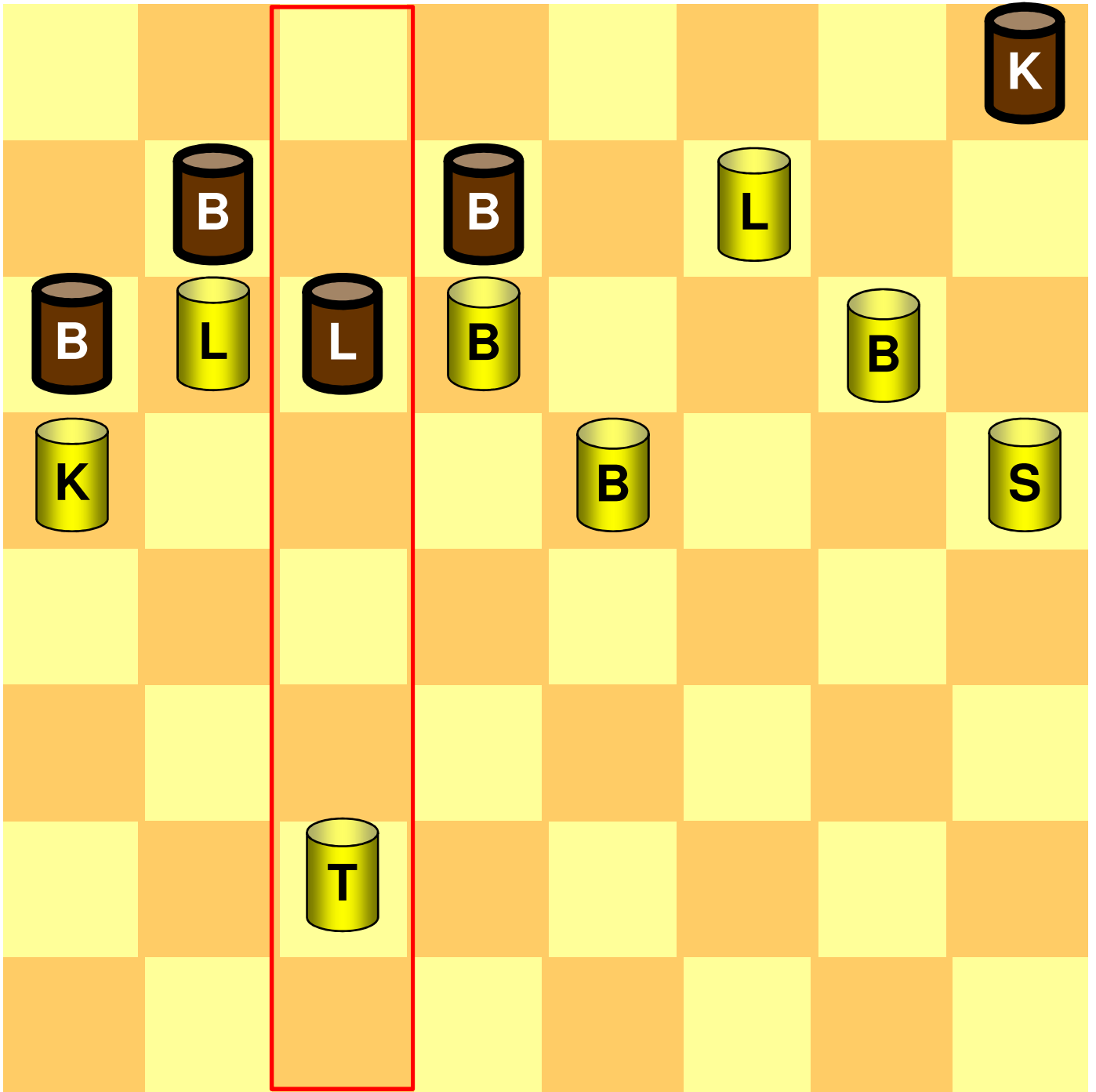
Portius, Schachspielkunst, 1920¹⁴, Seite 128,
Aufgaben in zwei Zügen II (Verfasser: Th. Herlin)

Aufgabe in zwei Zügen



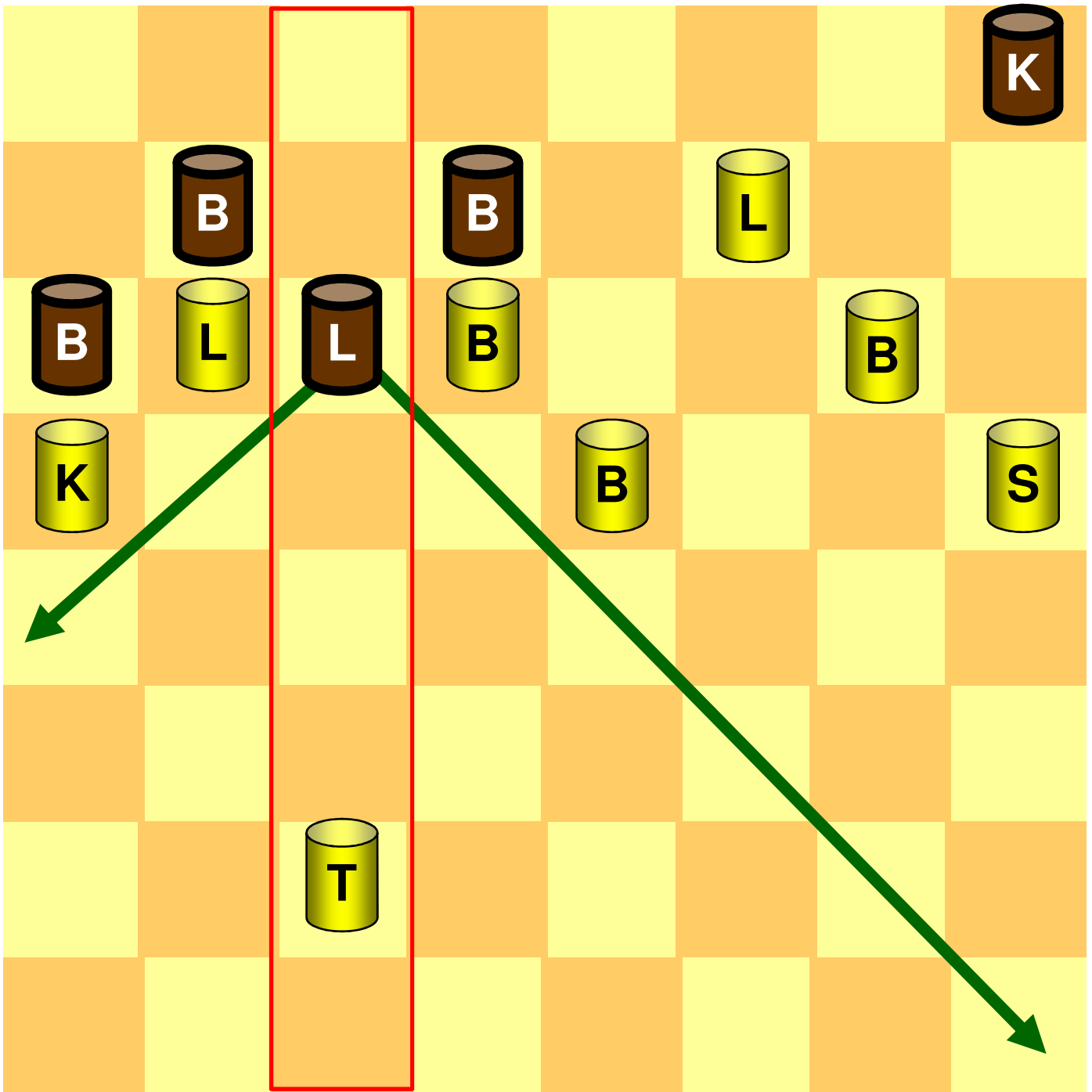
*Portius, Schachspielkunst, 1920¹⁴, Seite 128,
Aufgaben in zwei Zügen II (Verfasser: Th. Herlin)*

Linie c1 – c8



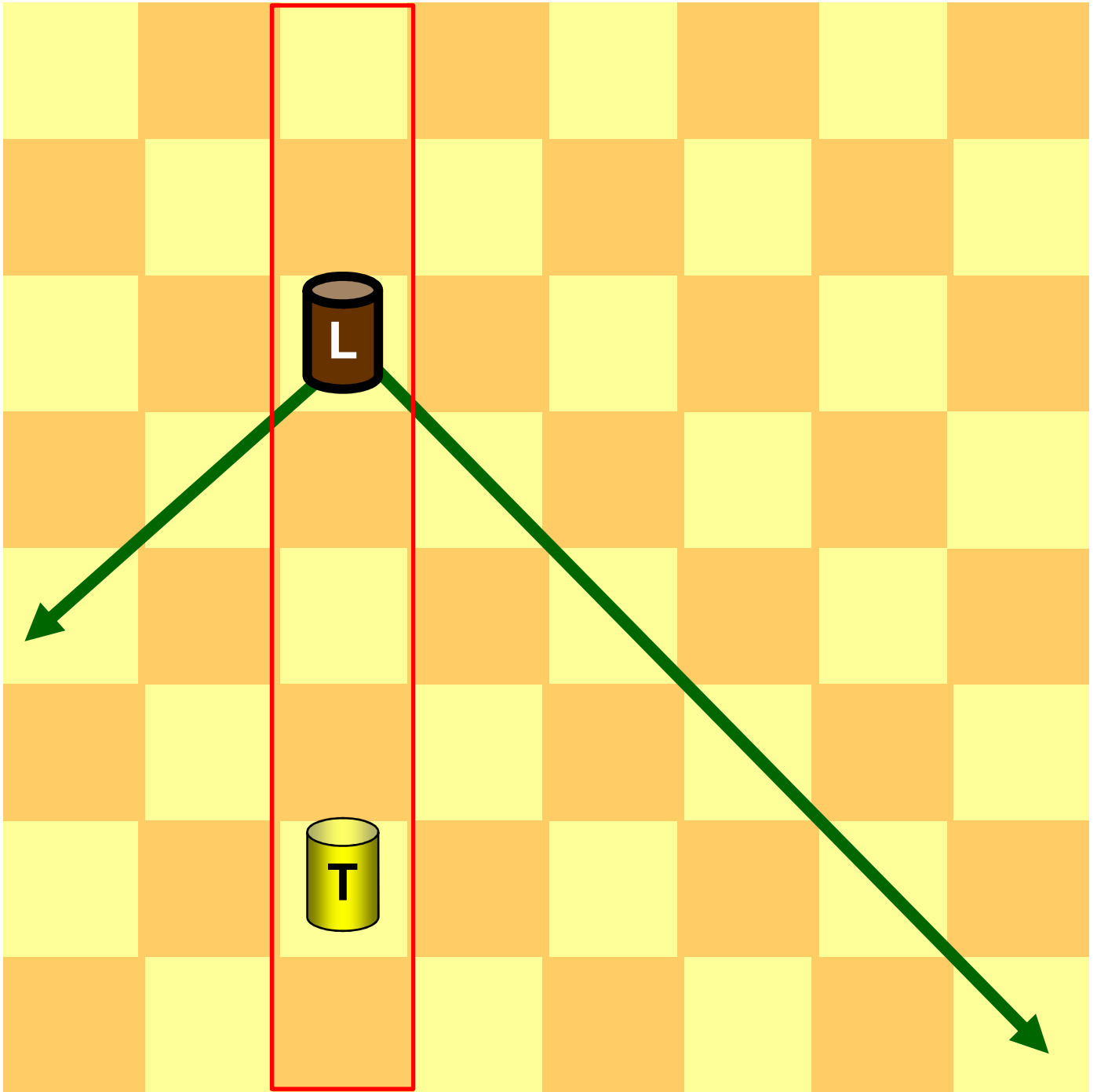
*Portius, Schachspielkunst, 1920¹⁴, Seite 128,
Aufgaben in zwei Zügen II (Verfasser: Th. Herlin)*

Linie c1 – c8



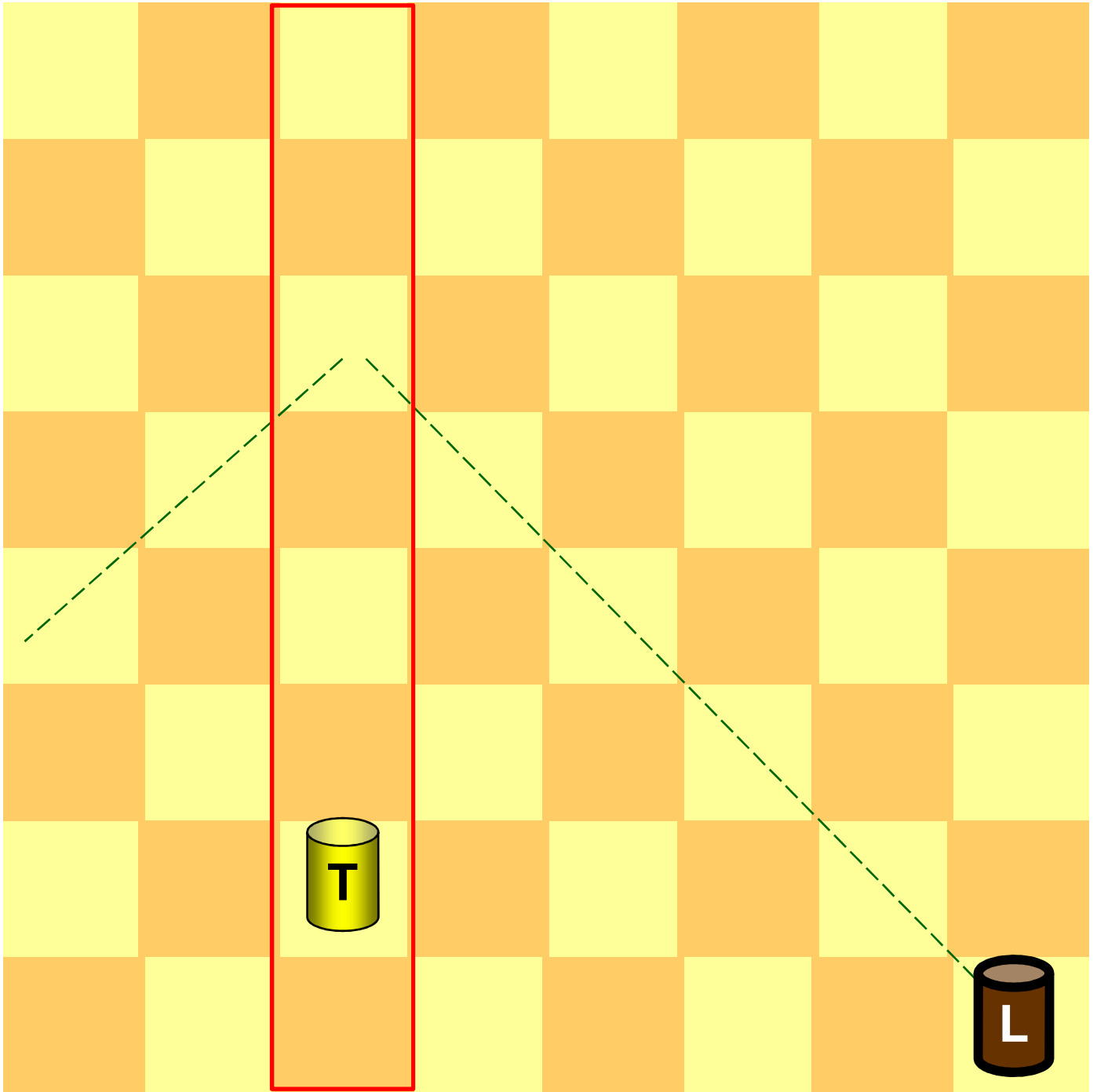
*Portius, Schachspielkunst, 1920¹⁴, Seite 128,
Aufgaben in zwei Zügen II (Verfasser: Th. Herlin)*

Linie c1 – c8



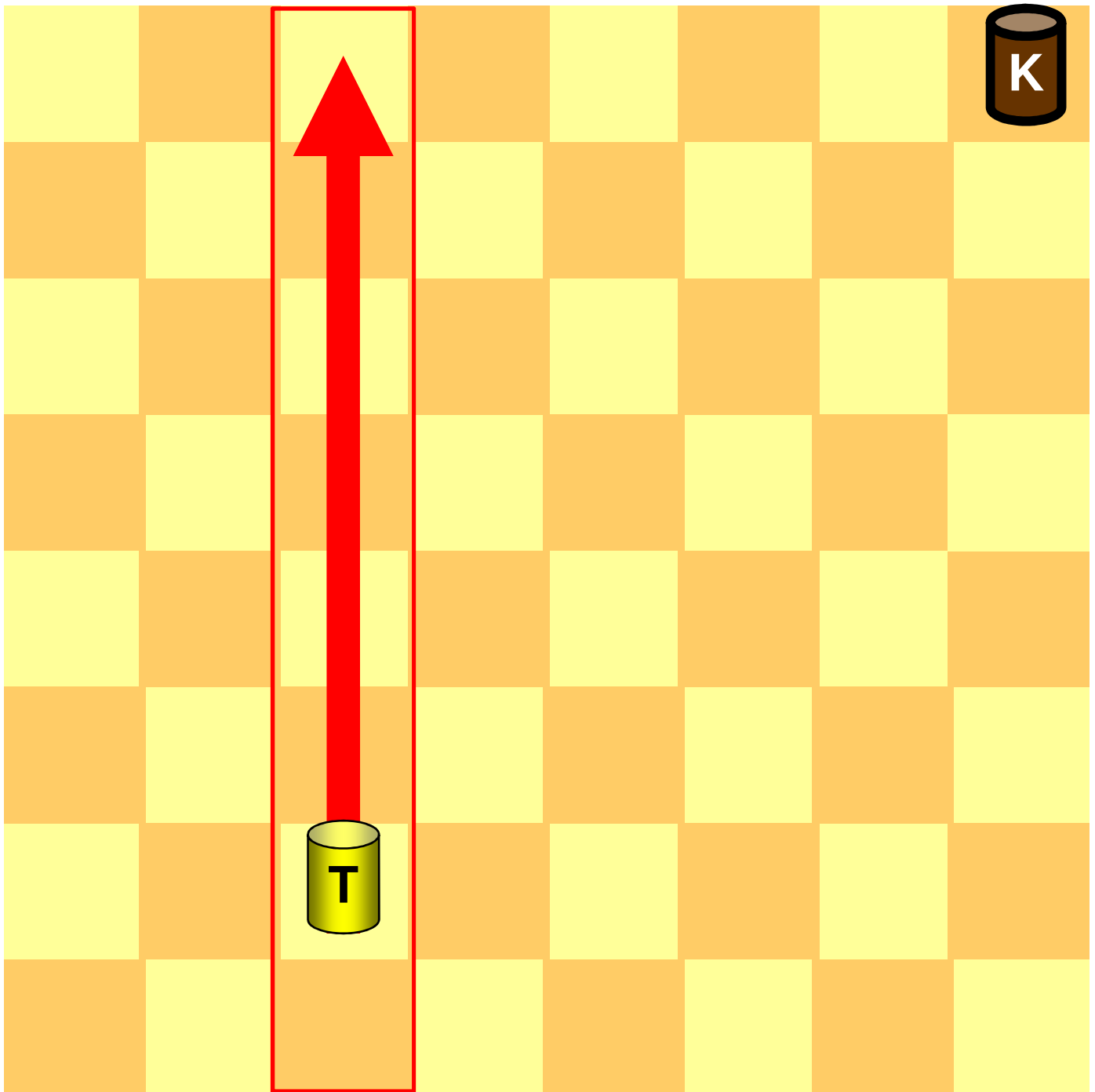
*Portius, Schachspielkunst, 1920¹⁴, Seite 128,
Aufgaben in zwei Zügen II (Verfasser: Th. Herlin)*

Linie c1 – c8



*Portius, Schachspielkunst, 1920¹⁴, Seite 128,
Aufgaben in zwei Zügen II (Verfasser: Th. Herlin)*

Linie c1 – c8

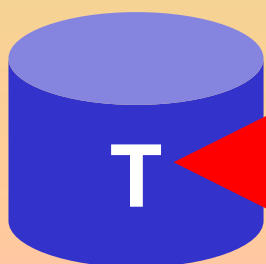


*Portius, Schachspielkunst, 1920¹⁴, Seite 128,
Aufgaben in zwei Zügen II (Verfasser: Th. Herlin)*

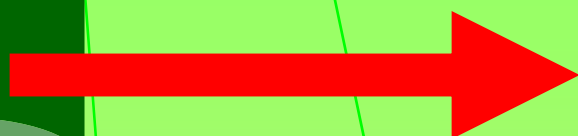
situativ-szenisch



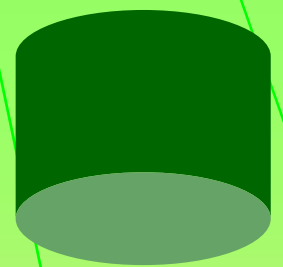
situativ-szenisch



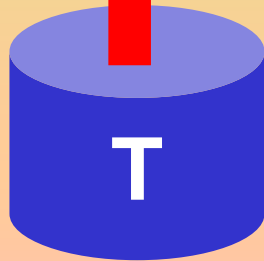
situativ-szenisch



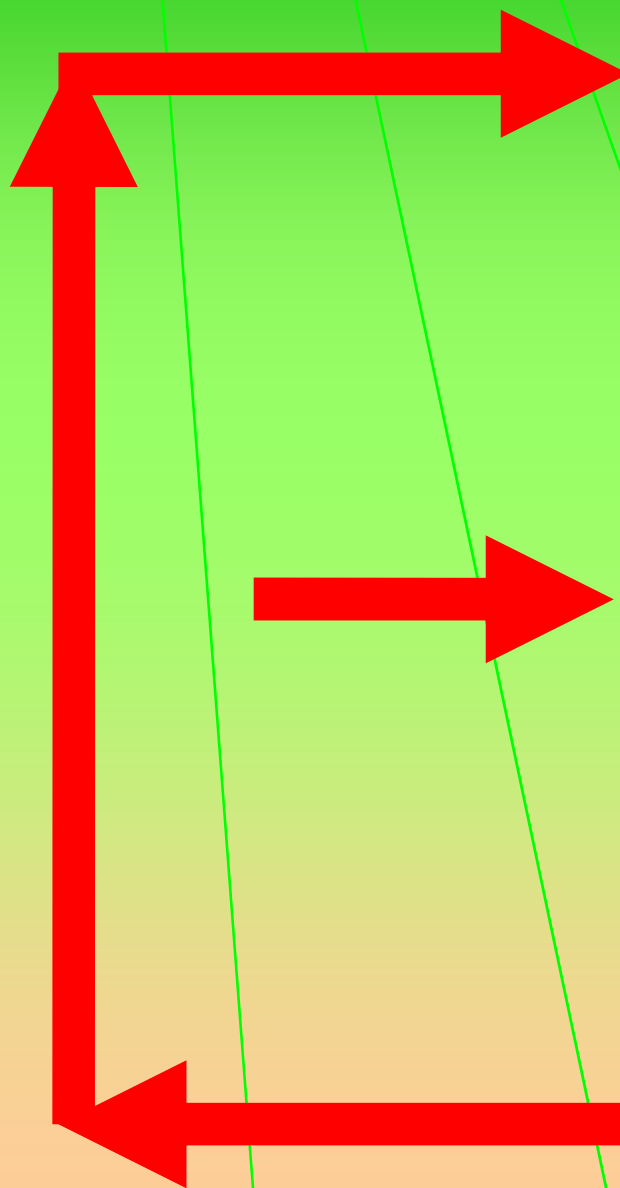
situativ-szenisch



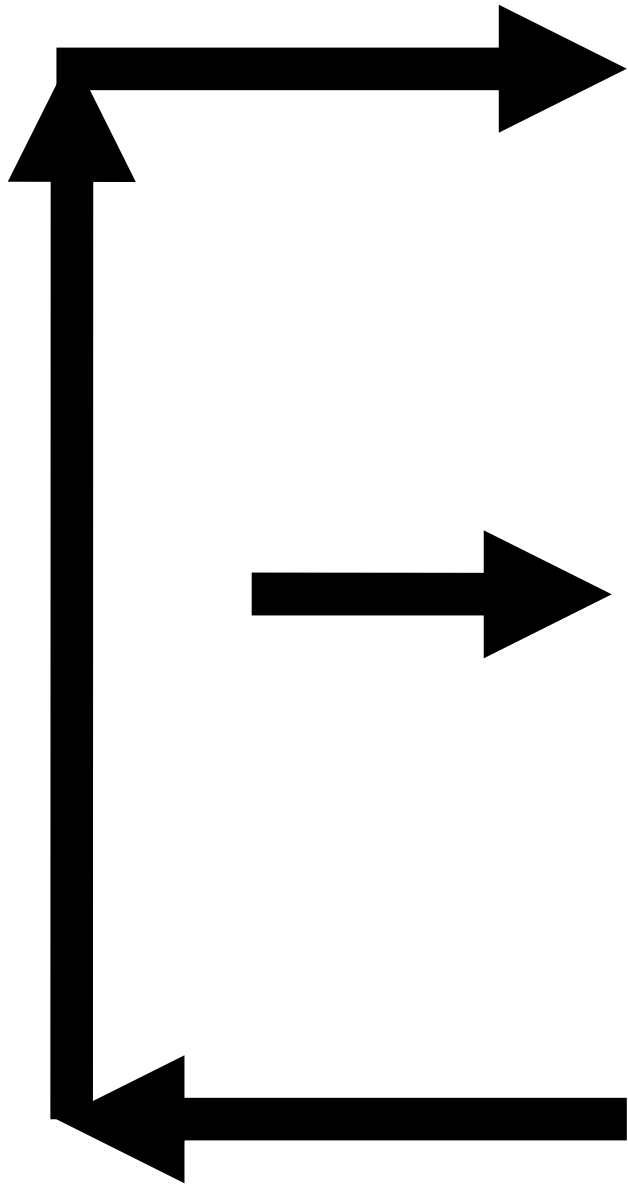
situativ-szenisch

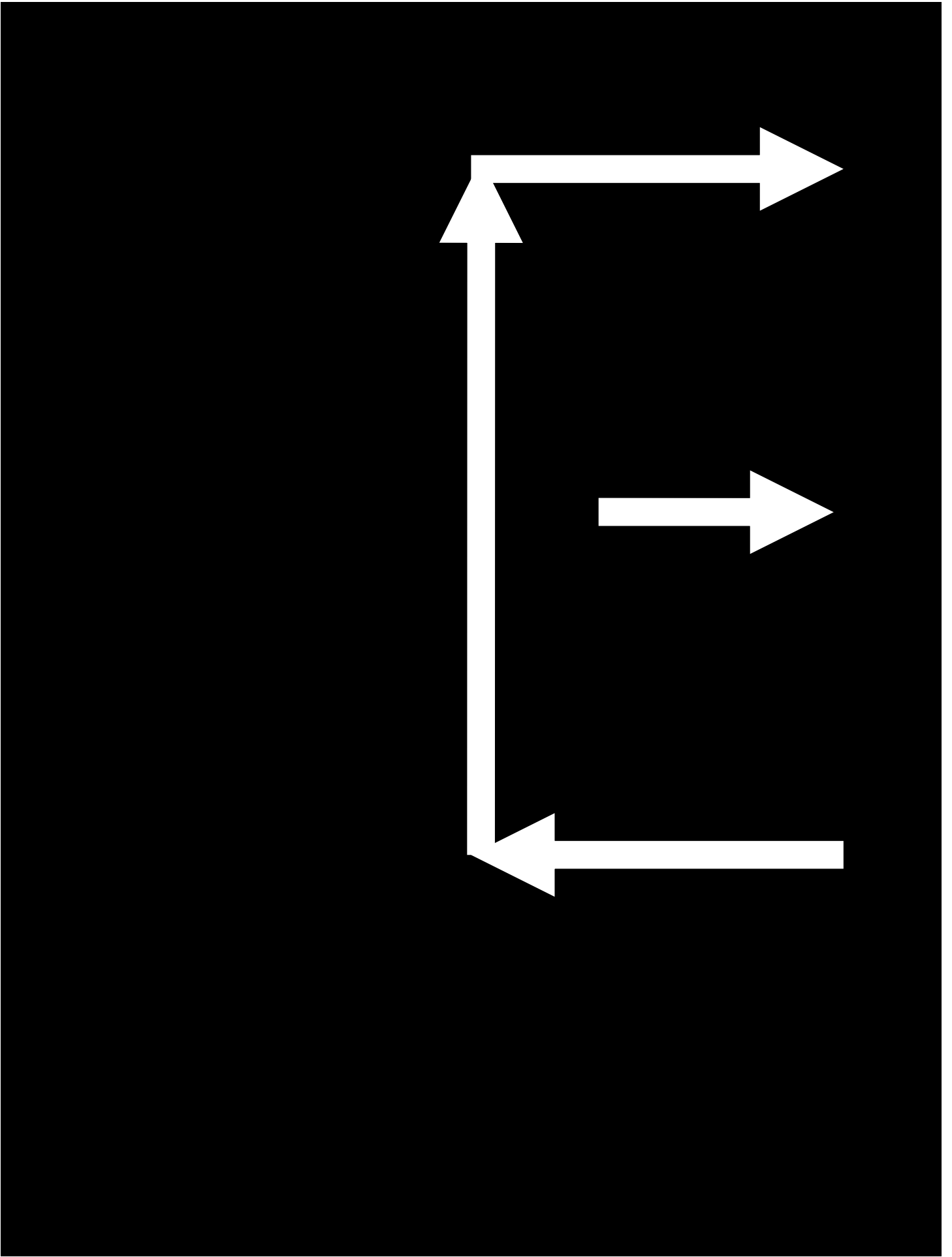


situativ-szenisch



abstrakt-symbolisch





abstrakt-symbolisch

